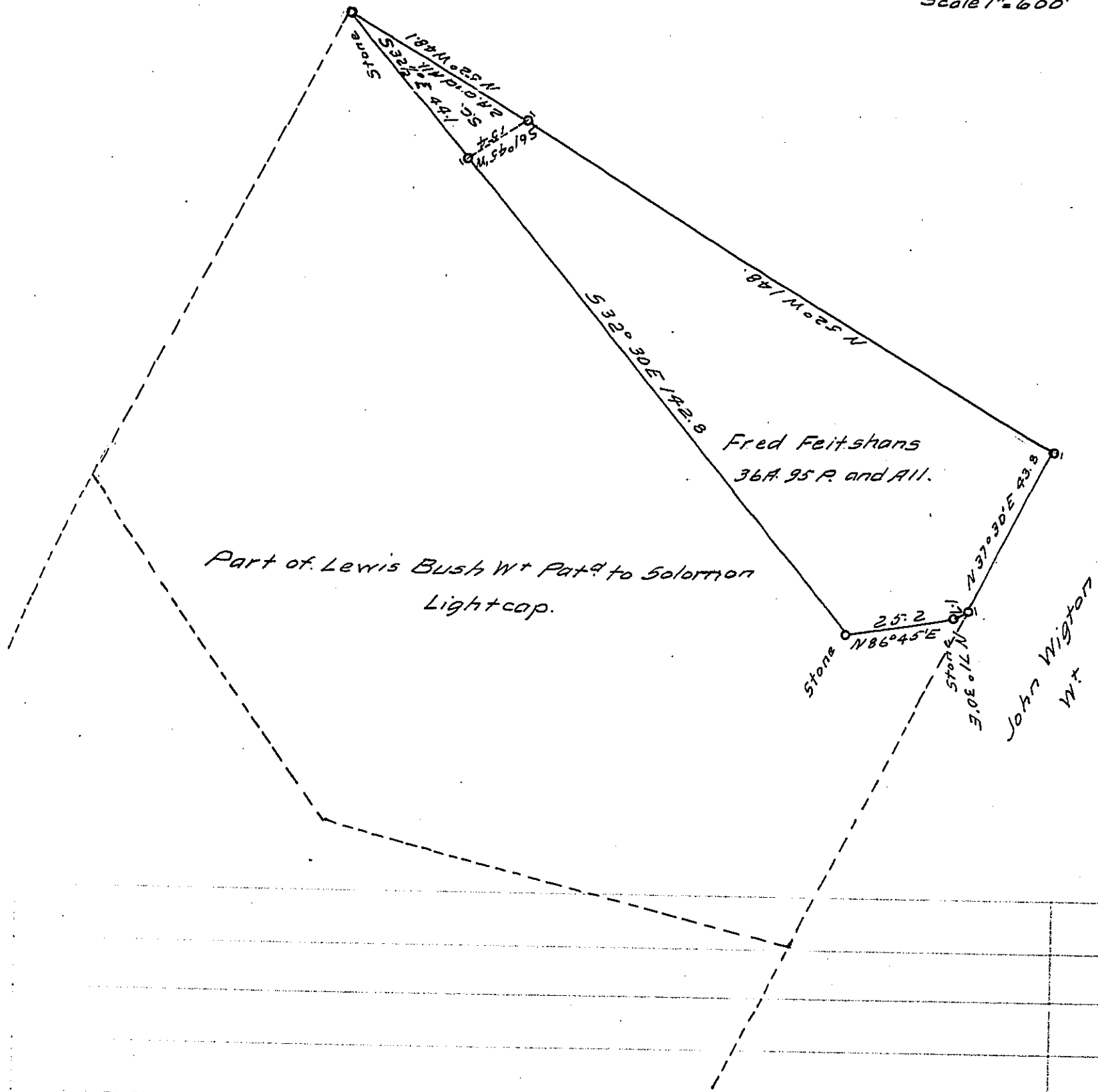


Scale 1" = 600'



A Draft of a tract of land situated in the township of Payne and County of Indiana, containing 36A. 95 P. & 2 Acres. acres respectively perches and allowance of six per cent. for roads, etc. Surveyed for S. Chambers & F. Feitshans the 2^d day of May 1904, it being part of a larger tract containing 320A. 7P. acres perches and allowance, originally surveyed in pursuance of a warrant granted to Lewis Bush dated the 14th day of April 1774.

To Hon. Henry Houck } Hiram Smith
 Secretary of Internal Affairs } County Surveyor.

IN TESTIMONY that the above is a copy of the original remaining on file in the Department of Internal Affairs of Pennsylvania, made conformably to an Act of Assembly approved the 16th day of February, 1833, I have hereunto set my Hand and caused the Seal of said Department to be affixed at Harrisburg, this third day of February, 1916.

Henry Houck
 Secretary of Internal Affairs.